



Urban Scavenger Hunt | SOMI | South Lawn

An anonymous artist entered a piece on behalf of the Special Olympics, Michigan (SOMI) Area 11. This piece serves as a focal point for the SOMI *Urban Scavenger Hunt*. ArtPrize visitors are encouraged to register for the scavenger hunt.

Leaf Rings | Terri Maloney-Houston | South Lawn

This installation is made of 10,000 individual pieces of porcelain clay. Each individual piece of clay has been impressed with a leaf from an Ash tree. This work references cairns, burial mounds and fairy rings.



Supporting the World | Pamela Timmons | Southwest Lawn



The joyful family of bronzed turtles is a pleasure to behold. They are set to remind visitors of the qualities turtles symbolize for many cultures throughout history: good health, longevity, serenity and protection.

New American Gothic | Ritch Branstrom | Southwest Lawn

This life-size sculpture is constructed of found and reclaimed objects.



Welcome to ArtPrize!



GRPM
Be curious.

Find your way.

Eve and the Serpent | Brent Harris | Northwest Lawn

This piece is a celebration of curiosity. It takes a humanist look at Eve and the Serpents' first meeting in the Garden of Eden. Eve gently stops the serpent underfoot, more curious observer than victim, she holds the power in the moment. The Serpent, startled, wraps himself around her leg and gazes upwards into her eyes.



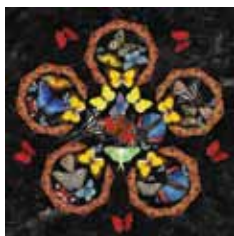
Weave Peace | Michele Miller-Hansen | North Lawn

This 30' dome is woven over by color. Visitors walk through the dome to experience the colorful weaving inside and out. The idea came from thoughts of nature and humanity within the delicate balance of our world shown through clean, balanced lines mixed with chaotic random weaves of color. *Weave Peace* offers select days and times where ArtPrize visitors will be able to write an intention, a name or a short message on a strip of paper and attach it to the dome.



Star Gazers | Mark Chatterley | Northeast Lawn

This piece showcases seven clay heads supported by a steel foundation, gazing toward the sky.



Shimmer | Philip Lynch | Northeast Facade
Digitally hand-painted and then fused with aluminum tiles, this secular piece was inspired by the GRPM.

Grand River Fish Petroglyphs | Kevin Sudeith | Northeast River Bank

The project began with the installation of five 3,000-pound Michigan field stones on the bank of the Grand River at the GRPM. The artist carved the fish of the Grand River— at life size – into the boulders. Sudeith focused on the river because of its historic importance to the city. Ancient species, like lake sturgeon, contrasted with the newly introduced species, like the prized salmon, tell the story of the river in a unique way. While his piece is part of the ArtPrize competition, it will remain as a permanent installation at the GRPM.



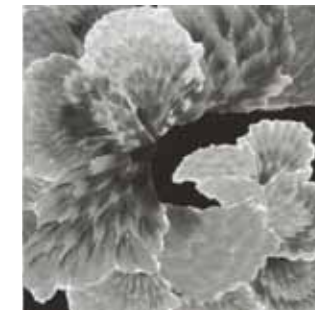
Grand Gathering | Karen Gubitz | East Gardens
Mystical seedpods are hand-woven together with trees, the trees appear to come out of the seeds while the seeds appear to grow out of the trees, exemplifying the circle of life. This temporary installation is a fiber sculpture. No glues, nails, tape, tacks or other forms of attachment were used in this sculpture.

Perspectives in Transformation in Community | Child Discovery Center | Carousel Walkway

This piece strategically places life-sized historic photographs throughout Grand Rapids where they were originally taken. It gives observers new perspective on transformation in our community. The GRPM is one of five locations where ArtPrize visitors can view this work.



Surge | Allison Svoboda | Southeast Facade
Organic patterns and forms found in nature instinctively drew the artist to use the theory of fractal geometry. She created infinite layers of self-similar shapes repeated in every living thing to collate images.



The Wind | Gil Bruvel | Southeast Lawn
Inspired by movement, *The Wind* seeks to evoke the vivid sensations wind produces on the skin. The sculpture shows ribbons of energy experienced by the seeker – her own neural patterns which, in a moment of focus and one-pointedness, match the vibration of the wind and the world around her.

Circle Series | Robert Henderson | Southeast Lawn

A combination of six metal circles, this piece is a testament to the artist's life. It was developed around the revelation of how circles support the evolution of man.



Mudpuppy | Dan Chudzinski | South Lawn
A monumental sculpture, this piece depicts a diver taking his pet bulldog for a walk on the ocean floor. It is constructed of steel, brass, fiberglass, canvas and an assortment of modified found objects. The bulldog is the size of a grizzly bear and the entire piece features nighttime illumination.