

## Grand Rapids Public Museum Scavenger Hunt.

### 1st Floor

#### Dolls

Search high and low to find the American Girl® doll Josefina Montoya. What color is the skirt of her dress?

- ☐ Brown  
☐ Green  
☐ Red  
☐ Yellow



#### Fossils

This fossil collector donated his personal collection to the GRPM in 1975. What was his name?

---

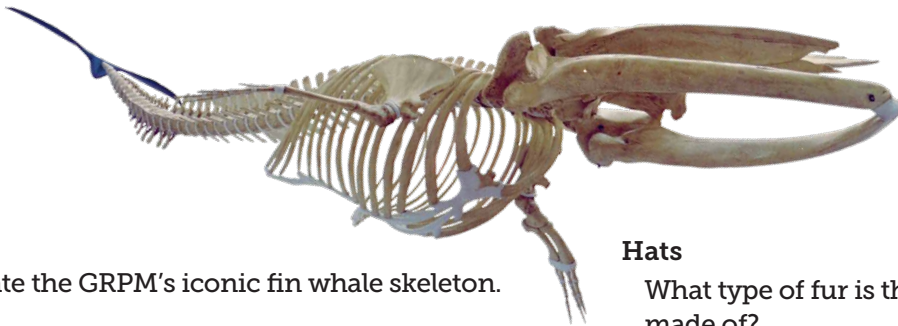
---



#### BONUS QUESTION:

How many fossil discoveries did he record in the hand-written catalogue on display?

- ☐ 471    ☐ 389    ☐ 500    ☐ 620



#### Finny

Investigate the GRPM's iconic fin whale skeleton.

When was Finny given to the Grand Rapids Public Museum?

---

Approximately how many feet long is Finny?

---

#### Streets of Old Grand Rapids

Step into the past! Visit a scale model of what 1890s downtown Grand Rapids looked and sounded like.

Find the name of the store where you could buy the following items:

Canned tomatoes

A rifle

Fabric to make your own clothes

Carrot seeds

An ice cream soda

#### Hats

What type of fur is this top hat made of?

---

---



## 2nd Floor

### Rocks and Minerals:

The ring pictured here was made over 2,000 years ago on the island of Cyprus! Look at the rocks in the display case and identify which type of rock was used to make this ancient ring.

Hint: It's a rock also found in Michigan.

- ☐ Rock Salt
- ☐ Fluorite
- ☐ Amethystine Quartz
- ☐ Agate



Ring with scaraboid,  
6th century B.C.  
Cypriot Photo from  
public domain

<https://www.metmuseum.org/art/collection/search/243569>

### Numismatics

Many banknotes around the world have serial numbers. Serial numbers help governments track each bill. Find and record the serial numbers of these bills in the "Reading Money" circular case.



**CHALLENGE:** Many countries design their banknotes with drawings of animals that can be found there. Can you find at least 3 different kinds of animals on bills in the "I Spy ..." circular display case?

### Fashion + Nature

Describe or draw at least 3 ways you think this dress was inspired by nature.



Music

Match the designs pictured below with the type of instrument they belong to in the display.

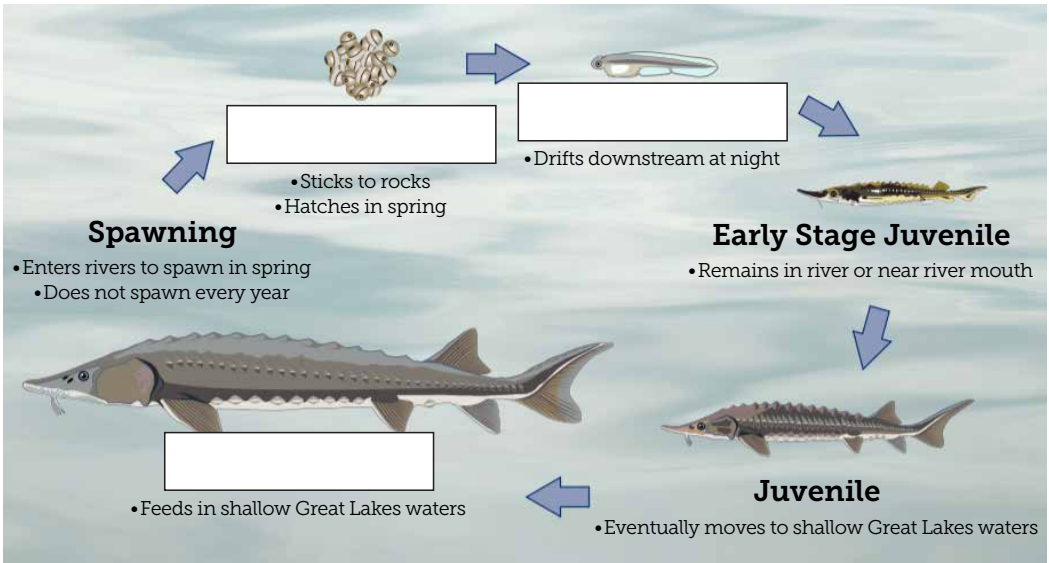
- A. Kokle
- B. Mandolin
- C. Goblet or Waist Drum
- D. Double Pan Flute



3rd Floor

Grand Fish, Grand River

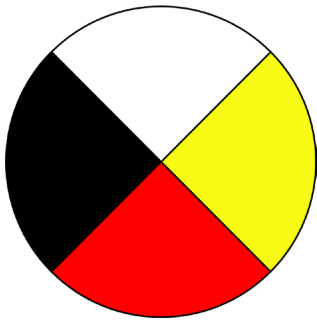
Find this Lake Sturgeon life cycle graphic to fill in the names of the missing stages of development.



For indigenous communities around the United States, including the Anishinabek, the Medicine Wheel symbolizes important teachings and traditions, as well as the balance of life.

Investigate the Medicine Wheel in the exhibit. Which color can symbolize Spring, East, Birth, and the Wonder and Innocence of Infants?

- ☐ Brown
- ☐ Green
- ☐ Red
- ☐ Yellow



Z is for Zoology

Explore the wide variety of bird specimens on display in the hallway and match the common name of each bird with the correct photograph.

- A. Cedar Waxwing
- B. Solitary Sandpiper
- C. Eastern Kingbird
- D. Common Goldeneye



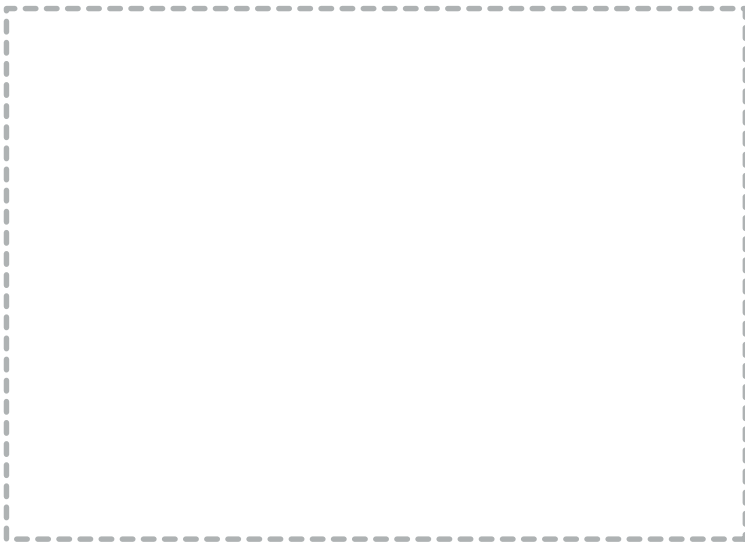


### Newcomers: The People of this Place:

Learn about the 45+ ethnic groups that call West Michigan home, including their stories, cultural traditions, and more.

What are your favorite foods on the wall?

Sketch or list them below:



Find and complete the hidden parts of each image located throughout the exhibit:



### West Michigan Habitats:

Take in the sights and sounds of nature while finding your favorite animals, plants and environments of West Michigan.

Which animal is not displayed in the Marsh habitat?

- ☐ Great Blue Heron
- ☐ Snapping Turtle
- ☐ Muskrat
- ☐ White Tail Deer



Visit Jim the Bug Man and search through the drawers. Sketch and label at least two of your favorite, most interesting critters!

