

## Grand Rapids Public Museum Scavenger Hunt Answer Key.

### 1st floor

#### Dolls

Search high and low to find the American Girl® doll Josefina Montoya. What color is the skirt of her dress?

Red

#### Fossils

This fossil collector donated his personal collection to the GRPM in 1975. What was his name?

Tom Brocher

#### BONUS QUESTION:

How many fossil discoveries did he record in the hand-written catalogue on display?

471

#### Streets of Old Grand Rapids:

Step into the past! Visit a scale model of what 1890s downtown Grand Rapids looked and sounded like.

Find the name of the store where you could buy the following items:

Canned tomatoes Kaminski Grocery

A rifle Lindberg Gunshop

Fabric to make your own clothes

Voigt, Herpolsheimer & Co. 80

Carrot seeds J.D. Dykstra

An ice cream soda Rudell Drug Store

#### Finny

When was Finny given to the Grand Rapids Public Museum?

1905

Approximately how many feet long is Finny?

75 feet

#### Hats

What type of fur is this top hat made of?

Beaver

### 2nd floor

#### Rocks and Minerals:

The ring pictured here was made over 2,000 years ago on the island of Cyprus! Look at the rocks in the display case and identify which type of rock was used to make this ancient ring.

Agate

#### Numismatics

Many banknotes around the world have serial numbers. Serial numbers help governments track each bill. Find and record the serial numbers of these bills in the "Reading Money" circular case.

\$10 = AF 78659975I

\$20 = BF66281446B

**CHALLENGE:** Many countries design their banknotes with drawings of animals that can be found there. Can you find at least 3 different kinds of animals on bills in the "I Spy..." circular display case

Many correct answers, including rooster, lion, horse, elephant

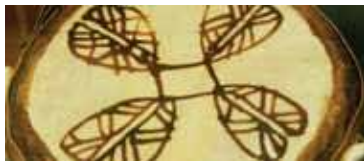
#### Fashion + Nature

Describe or draw at least 3 ways you think this dress was inspired by nature.

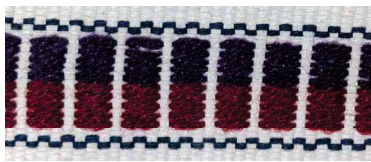
Many correct answers, including floral print on skirt, butterfly hat, mossy material on face, feathers decorating the chest.

## Music

Match the designs pictured below with the type of instrument they belong to in the display.



Goblet or Waist Drum



Double Pan Flute



Kokle

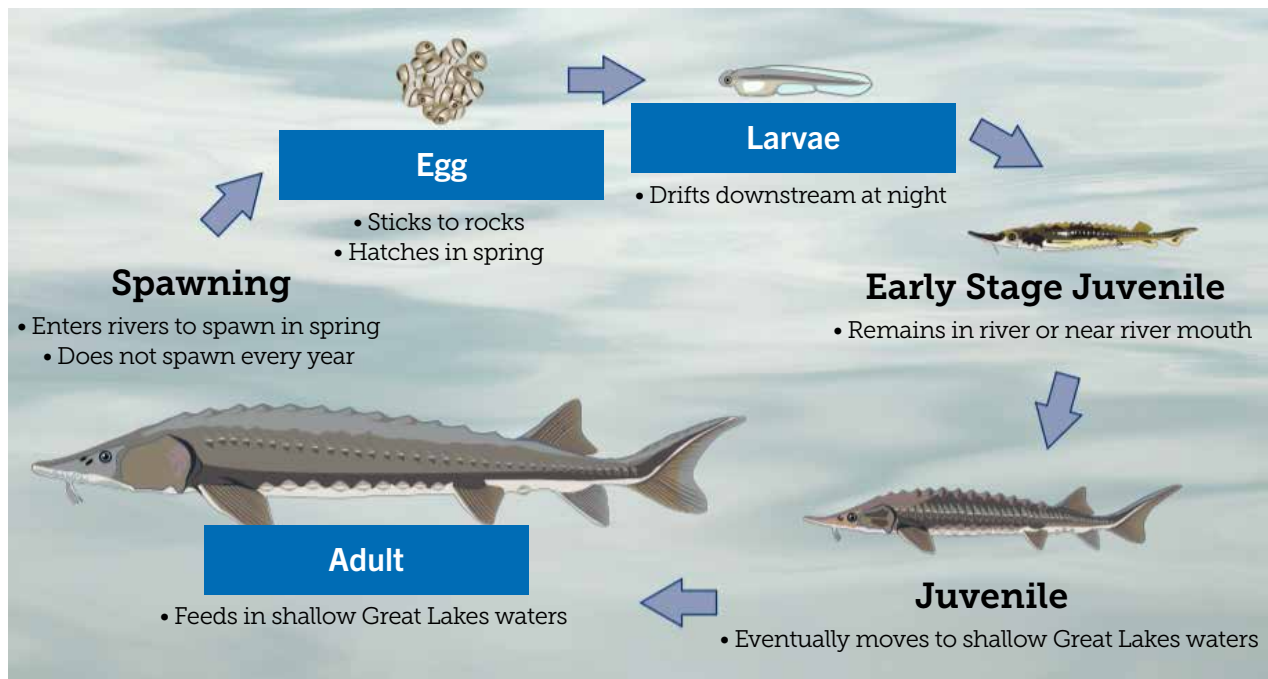


Mandolin

## 3rd floor

### Grand Fish, Grand River

Find this Lake Sturgeon life cycle graphic to fill in the names of the missing stages of development.



Investigate the Medicine Wheel in the exhibit. Which color can symbolize Spring, East, Birth, and the Wonder and Innocence of Infants?

Yellow

## Z is for Zoology

Explore the wide variety of bird specimens on display in the hallway and match the common name of each bird with the correct photograph.



Common Goldeneye



Eastern Kingbird



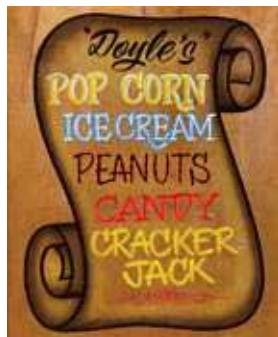
Cedar Waxwing



Solitary Sandpiper

## Newcomers: The People of this Place:

Find and complete the hidden parts of each image located throughout the exhibit:



## West Michigan Habitats:

Take in the sights and sounds of nature while finding your favorite animals, plants and environments of West Michigan.

Which animal is not displayed in the Marsh habitat?

White Tail Deer