

## Call for Artists - Beadwork

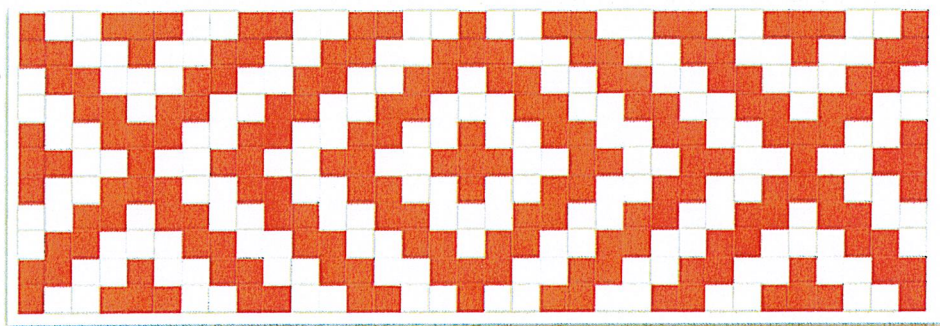
### *Anishinaabek: The People of This Place Beadwork Project*

#### Introduction and Background:

For 30 years, the Grand Rapids Public Museum has been proud to share one of its core exhibits, Anishinaabek: The People of This Place, created collaboratively with the Anishinaabe people of Michigan. Over the next two years museum staff and Native partners will completely redesign this space to breathe new life into this exhibit for future generations. Under the guidance of the Estoojik Advisory Council and community partners, the expanded exhibit will continue the story of Anishinaabe people, emphasizing the theme of "We Are Still Here." We can't wait to share the new exhibit, Anishinaabek: The First People of This Place, beginning in 2026.

The Grand Rapids Public Museum is placing a call for artists to submit two (2) pieces of beadwork to be integrated over the entrance of the redesigned Anishinaabek: The People of This Place exhibit. We aim to collect a total of 363 beaded squares (hereby referred to as tiles), size 4 inches x 4 inches. Artists are requested to submit 2 tiles; 1 with a white background and 1 with a darker background of the artist's choosing. Once all tiles are assembled, the completed panel will be 3' 8" tall x 11' long and will hang over the entrance of the redesigned Anishinaabek: The People of This Place exhibit.

Please see the following rendering for reference:



The entire design would be 3',8" tall and 11 feet long. A total of 363 squares must be produced. 183 would be of the individual artists choosing and 180 would be in the white bead pattern.

Our goal with this beading project is to create a unique exhibit entrance showcasing the talent and culture of the Anishinaabek community. Location of the completed beaded panel is the Grand Rapids Public Museum's 3rd floor gallery, directly above the Anishinaabek exhibit entrance. All beadwork submitted will become fixed property of the Grand Rapids Public Museum, and will follow all policies and procedures related to its care and preservation.

### **Submission Guidelines and Requirements:**

The following submission guidelines & requirements apply to this Call for Artists:

Beadwork must meet the 4" x 4" size specification to be included in the panel.

All tiles may have designs, both representative or abstract. The white tiles should be primarily white or cream in color with a tone-on-tone pattern. The darker tiles may be multicolored, all one shade of color, patterned or solid. Darker tiles should read differently from the white so that this "woven" pattern reads through. (shown in red and white)

The GRPM is a family-friendly museum. Pieces containing political or offensive subject matter will not be accepted.

Compensation is available at the rate of \$100 per 4" x 4" tile. Checks will be mailed after the beadwork is received and artist information confirmed by the Museum. Only one set of tiles (1 light, 1 dark) will be accepted from each artist.

Artists may submit their work to Katrina Furman at 272 Pearl Street NW, Grand Rapids, MI 49504, via mail or in person by appointment. Please email [kfurman@grpm.org](mailto:kfurman@grpm.org) to schedule a time.

**Beadwork will be accepted until June 1, 2026, or until the goal of 363 pieces is reached.**

### **Project Scope:**

The scope of the project entails Anishinaabe artists to create a total of 363 beaded tiles, to be assembled into a completed panel that will be 3' 8" tall x 11' long. Artists are requested to submit two (2) 4 inches x 4 inches squares (tiles); 1 with a white background and 1 with a darker background of the artist's choosing. All beadwork submitted will become fixed property of the Grand Rapids Public Museum, and will follow all policies and procedures related to its care and preservation.

Any questions may be directed to Katrina Furman, Anishinaabe Curator at [kfurman@grpm.org](mailto:kfurman@grpm.org)